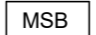



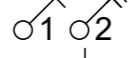


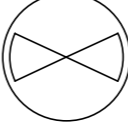

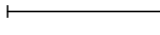
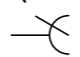
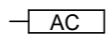




ELECTRICAL LEGEND:

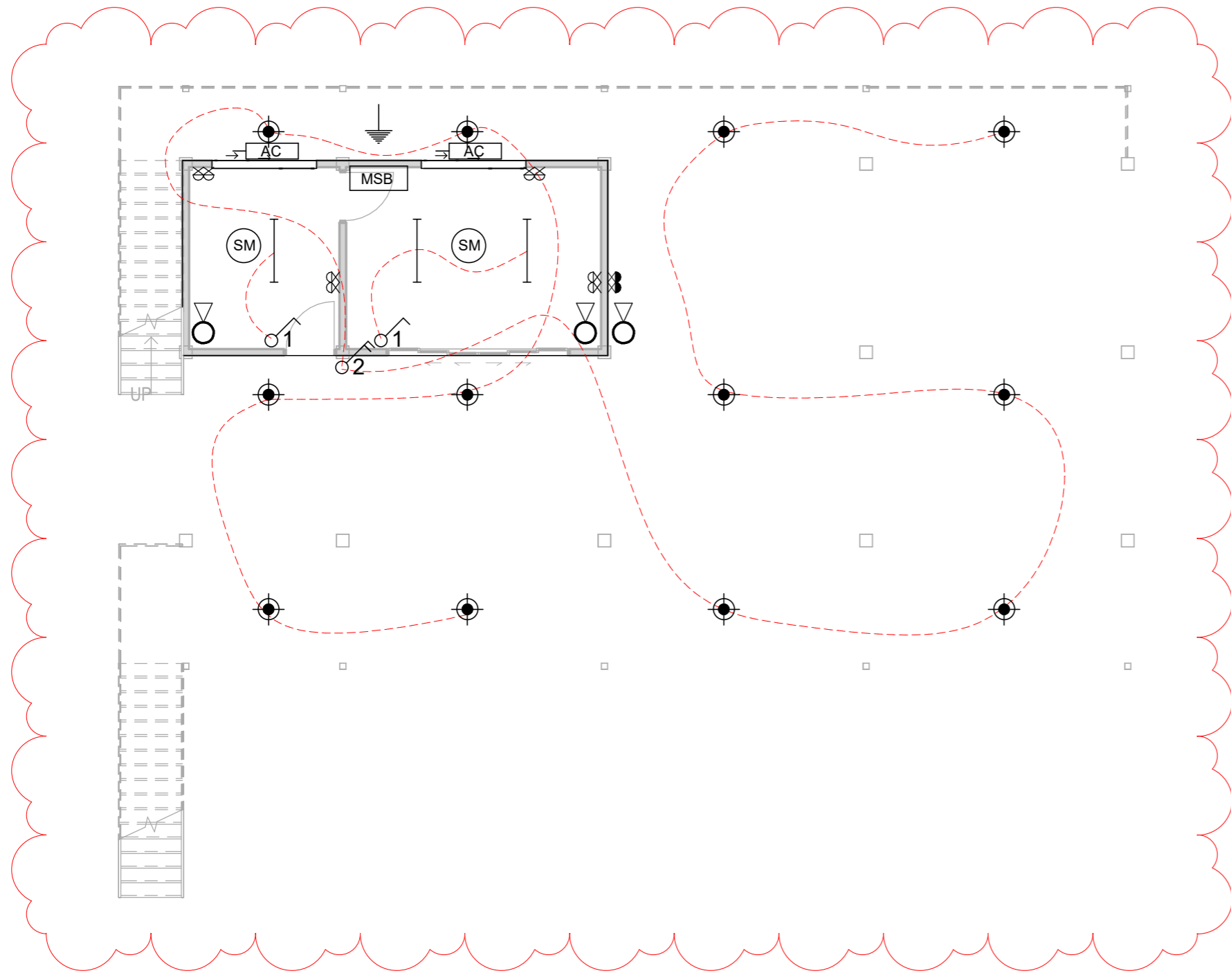
-  MSB Main switch board
-  Double GPO
-  Double GPO - with weatherproof cover
-  Selected ceiling mounted LED light bulb
-  Light switch single, double
-  Earthing
-  Selected wall/post mounted light
-  Ceiling fan
-  Cable wire
-  Light batten double
-  Fan switch.
-  Selected air conditioning unit

FIRE SAFETY


-  ABE fire extinguisher to AS2444 portable fire extinguishers and fire blankets. Place max 1200mm from finished floor level to top of extinguisher or min. 100mm from finished floor level to bottom of extinguiser
-  Ceiling mounted battery operated smoke detector to CODE

NOTE:

1. ELECTRICAL SCHEMATIC PLANS SHALL BE INSTALLED BY A QUALIFIED AND LICENSED ELECTRICIAN/ENGINEER
2. WHERE APPLICABLE, USE ENERGY EFFICIENT APPLIANCES
3. CABLE WIRE SIZES SHOULD BE:
 - 4 OR 6 sqmm FOR UNDERGROUND CABLES FROM PUB BOX TO HOUSEHOLD SWITCHBOARD
 - 2.5 sqmm CABLES CONNECTING SWITCHBOARD TO GPOS
 - 2.5 sqmm CABLES CONNECTING SWITCHBOARD TO SWITCH POINTS
 - 1.5 sqmm CABLES CONNECTING SWITCHPOINTS TO LIGHTS AND OTHER CEILING/WALL MOUNTED APPLIANCES



1 0 LEVEL G - Electrical Plan
 Scale: 1 : 100



architectural Design, civil & structural Engineering, build-works Costing Consultants
 e: consult@DECons.com | m: +686 73069657 | facebook: DECons page

TWO STOREY OFFICE & GARAGE

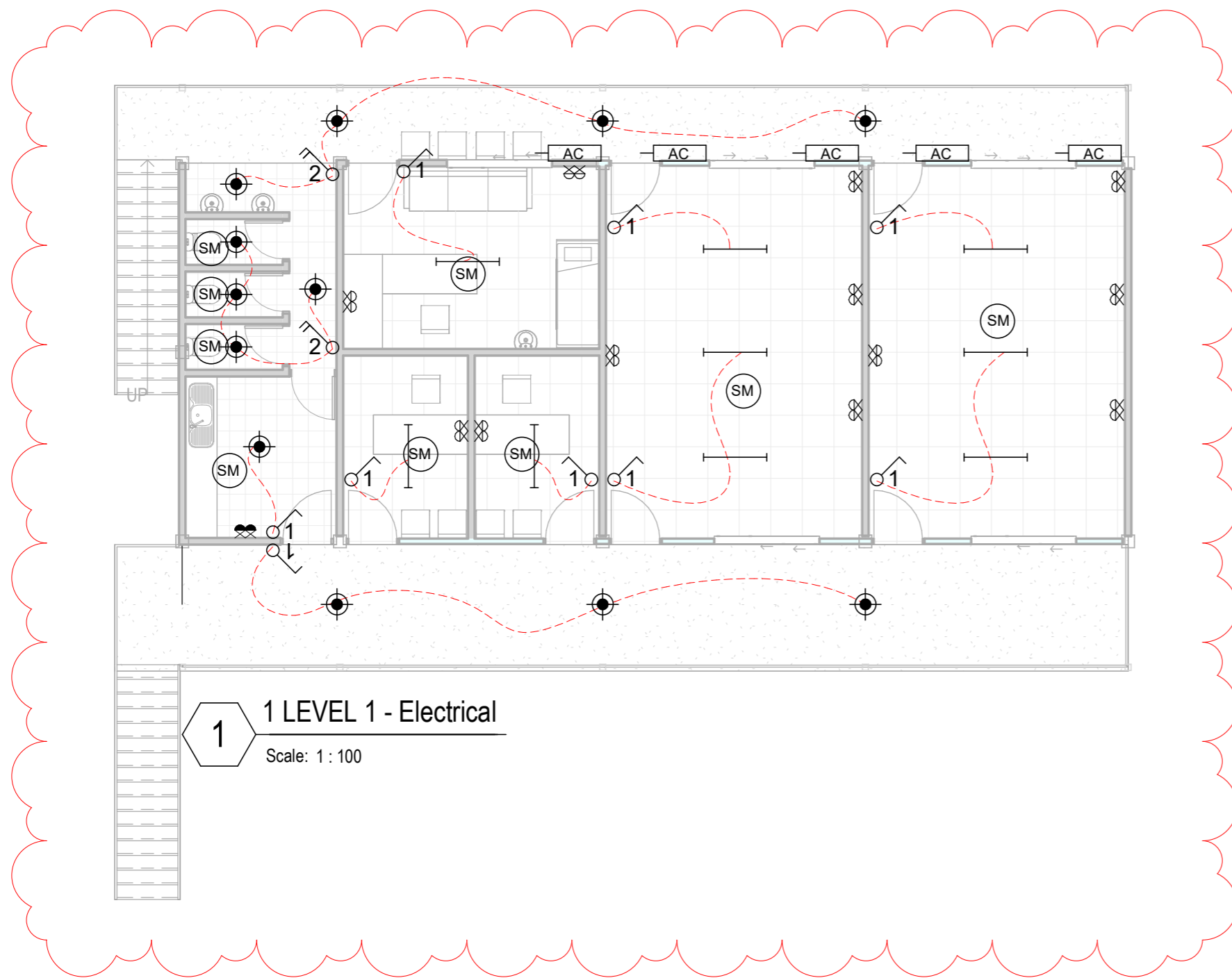
CLIENT: KIC
 PROJECT NO: SOE2502

DWG TITLE:
SERVICES PLAN - LG Electrical

DRAWN by: TTEBAU
 REVIEWED by: KIC
 DATE: 26/06/2025
 SCALE: 1 : 100

DRAWING NUMBER: **A05** ISSUE: **for tender**





TWO STOREY OFFICE & GARAGE

CLIENT: KIC
PROJECT NO: SOE2502

DWG TITLE:
SERVICES PLAN - L1
Electrical

DRAWN by: TTEBAU
REVIEWED by: KIC
DATE: 26/06/2025
SCALE: 1 : 100

DRAWING NUMBER: A06
ISSUE: for tender

