



MINISTRY OF LINE & PHEONIX ISLAND DEVELOPMENT
CIVIL ENGINEERING & TECHNICAL DIVISION (CETD)
 Ronton, Kiritimati Is
 Phone: 686 81214 ext 219
 Website: www.mlpid.gov.ki

PROJECT TITLE:
PROPOSED KPA NEW OFFICE AT TABAKEA

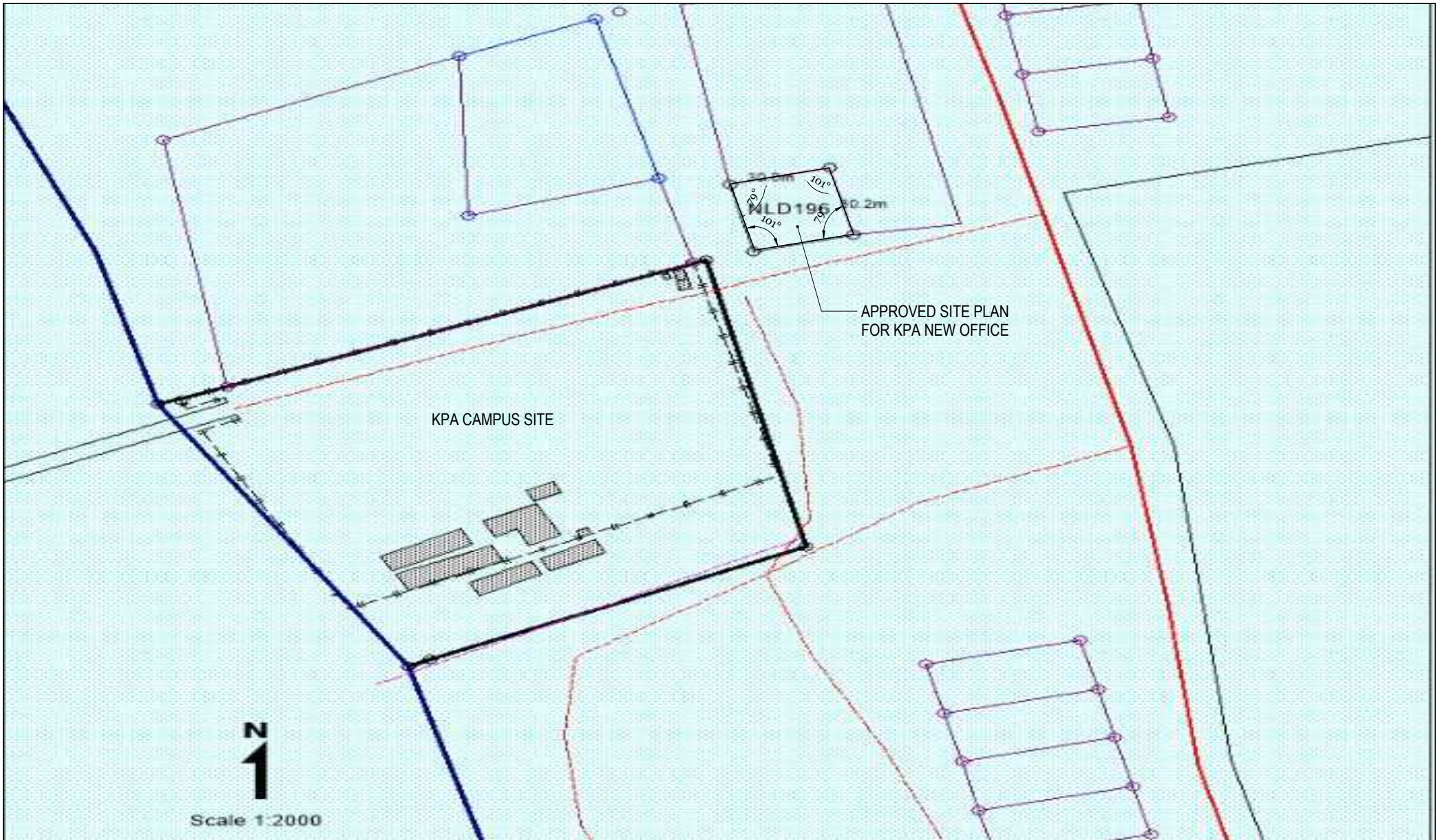
SITE PLAN

Drawn by: Teiwaki Ruata (TR)
 Checked by: John Kaaben (JK)
 Scale: 1:50

May 22, 2018

A

01



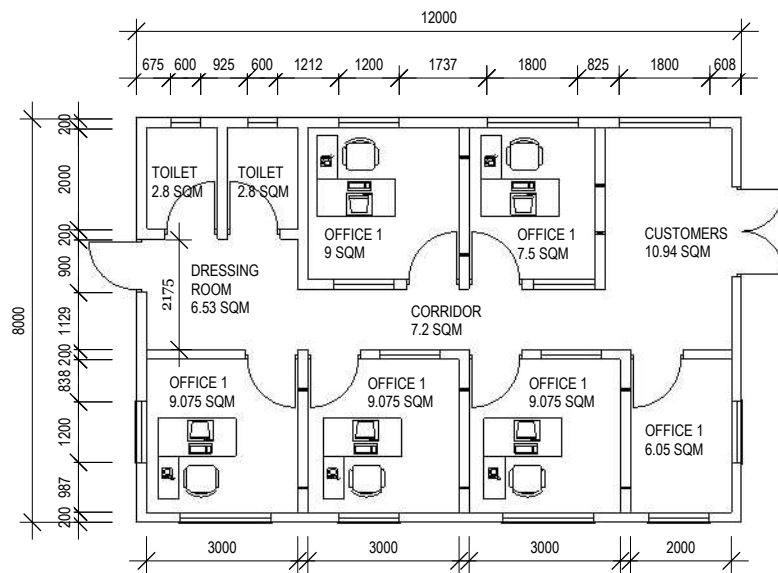
KPA CAMPUS SITE

30.2m
10.1m
WLD196
10.1m
30.2m

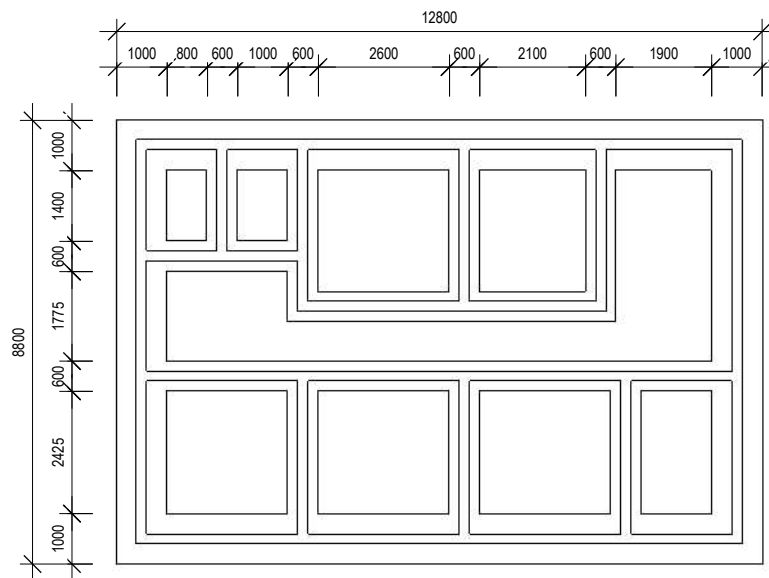
APPROVED SITE PLAN
FOR KPA NEW OFFICE



Scale 1:2000

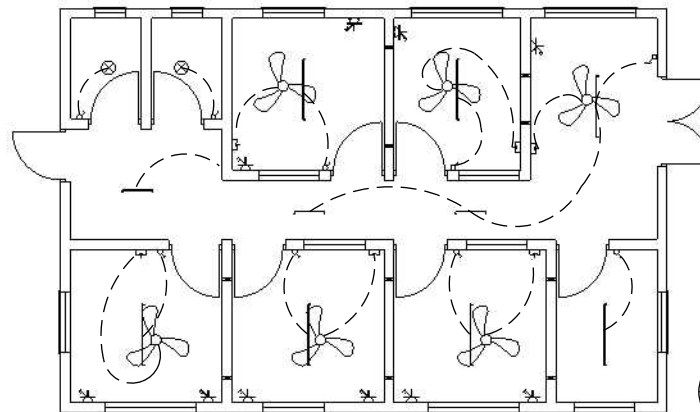


A FIRST FLOOR PLAN
A01 Scale: 1:150



B FOUNDATION PLAN
A02 Scale: 1:150

LEGEND - Electrical



C FIRST FLOOR ELECTRICAL PLAN
A03 Scale: 1:150

MINISTRY OF LINE & PHEONIX ISLAND DEVELOPMENT
CIVIL ENGINEERING & TECHNICAL DIVISION (CETD)
Ronton, Kiritimati Is
Phone: 686 81214 ext 219
Website: www.mlpid.gov.ki

PROJECT TITLE:
PROPOSED KPA NEW OFFICE AT TABAKEA

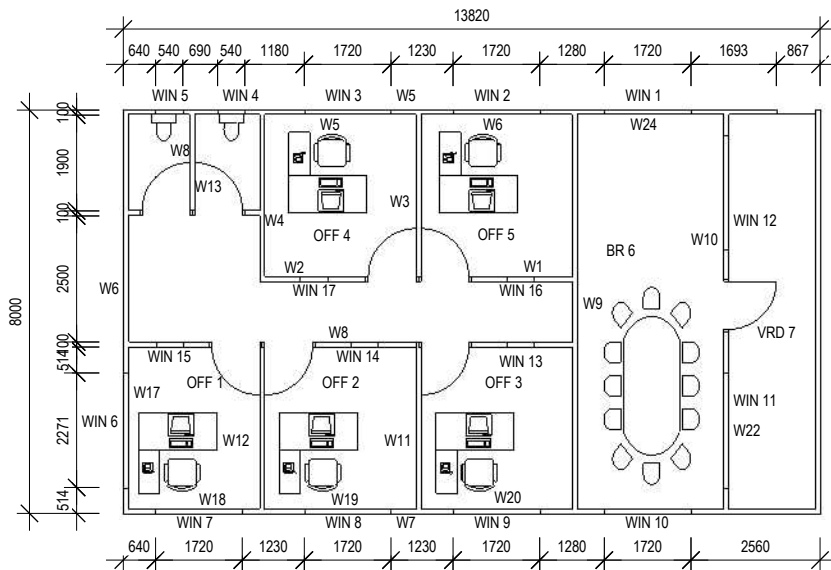
LAYOUT PLAN, FOUNDATION PLAN ELECTRICAL PLAN

Drawn by: Teiwaki Ruata (TR)
Checked by: John Kaaben (JK)

May 22, 2018

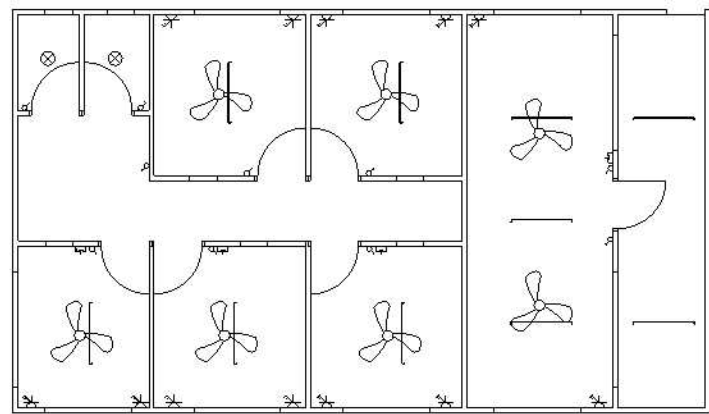
A

02




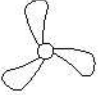






WIN 1 - WINDOWS
 W19 - WALL TIMBER
 OFF 5 - OFFICE ROOM
 VRD 7 - VARANDER
 BR 6 - BOARD-ROOM

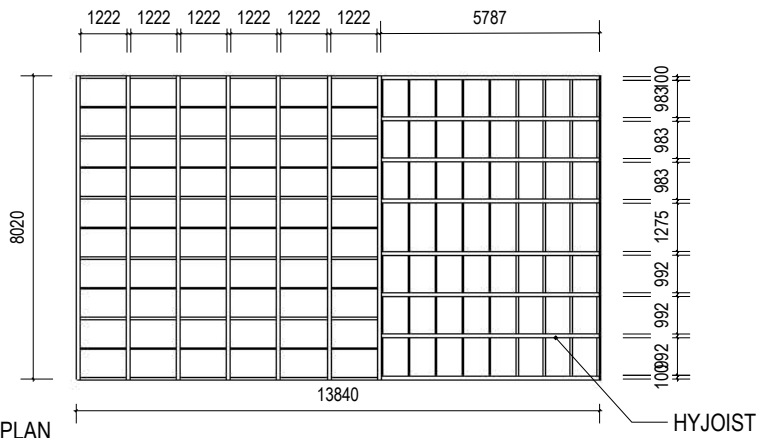
C
A04 SECOND FLOOR PLAN
 Scale: 1:150



LEGEND - Electrical

D
A05 ELECTRICAL PLAN
 Scale: 1:150

-  SWITCH BOARD
-  CEILING FAN
-  CEILING FAN SWITCH
-  600MM FLUORECENT LIGHT
-  1200MM FLUORECENT LIGHT
-  LIGHT PULP
-  DOUBLE SWITCH
-  LIGHT SWITCH



C
A04 HYJOIST PLAN
 Scale: 1:150

MINISTRY OF LINE & PHEONIX ISLAND DEVELOPMENT
CIVIL ENGINEERING & TECHNICAL DIVISION (CETD)
 Ronton, Kiritimati Is
 Phone: 686 81214 ext 219
 Website: www.mlpid.gov.ki

PROJECT TITLE:
 PROPOSED KPA NEW OFFICE AT TABAKEA

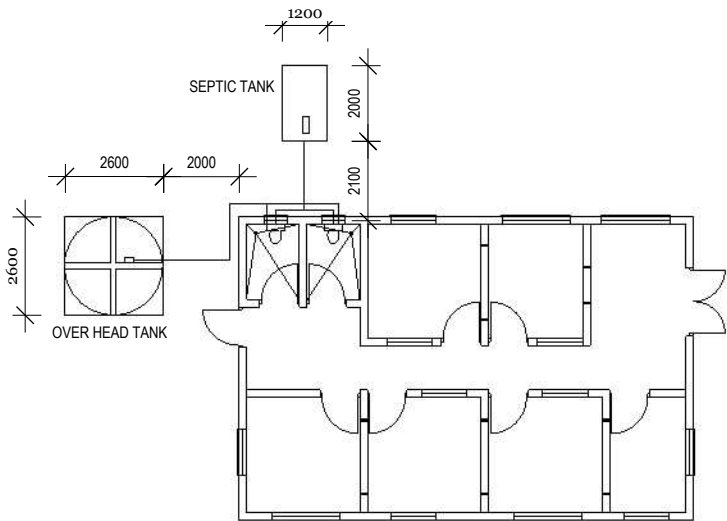
SECOND FLOOR PLAN, SECOND FLOOR ELECTRICAL

Drawn by: Teiwaki Ruata (TR)
 Checked by: John Kaaben (JK)

May 22, 2018

A

03



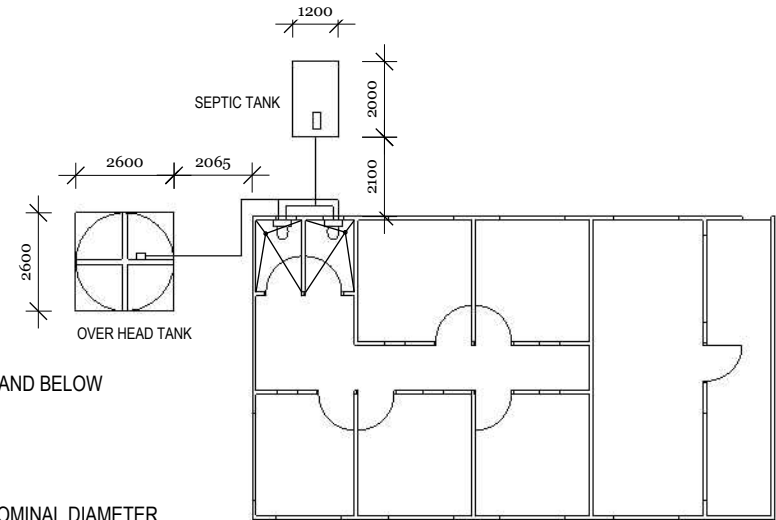
E PLUMPING PLAN (A)
A06 Scale: 1:200

PLUMPING NOTES & SPECIFICATION

USE UPVC FOR ALL DRAINAGE PIPES, ABOVE AND BELOW GROUND.

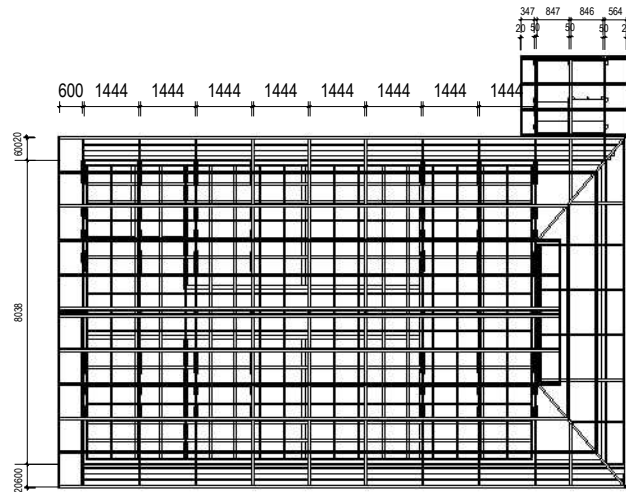
PLUMPING LEGEND

- INLET MIN.20-40 NOMINAL DIAMETER
- OUTLET (SIZE REFER NOTES BELOW)



F PLUMPING PLAN (B)
A07 Scale: 1:200

G ROOFING PLAN
A08 Scale: 1:200



**MINISTRY OF LINE & PHEONIX ISLAND DEVELOPMENT
CIVIL ENGINEERING & TECHNICAL DIVISION (CETD)
Ronton, Kiritimati Is
Phone: 686 81214 ext 219
Website: www.mlpid.gov.ki**

PROJECT TITLE:
PROPOSED KPA NEW OFFICE AT TABAKEA

FIRST FLOOR PLUMPING PLAN, SECOND FLOOR PLAUMPING,
ROOFING PLAN

Drawn by: Teiwaki Ruata (TR)
Checked by: John Kaaben (JK)

May 22, 2018

A

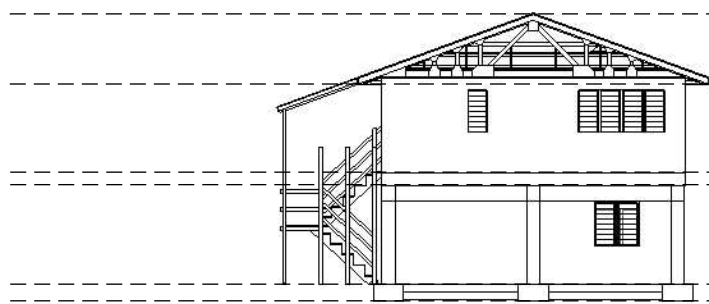
04



A
A01 FRONT ELEVATION
Scale: 1:200



A
A02 BACK ELEVATION
Scale: 1:200



A
A03 END ELEVATION
Scale: 1:200



A
A04 END ELEVATION
Scale: 1:200

- 1.8M ROOF LEVEL
- 2.4M SECOND FLOOR LEVEL
- 0.350M BEAM LEVEL
- 2.6M FIRST FLOOR LEVEL
- 0.450M FLOOR LEVEL
- 0.0M FOOTING LEVEL

- 1.8M ROOF LEVEL
- 2.4M SECOND FLOOR LEVEL
- 0.350M BEAM LEVEL
- 2.6M FIRST FLOOR LEVEL
- 0.450M FLOOR LEVEL
- 0.0M FOOTING LEVEL

MINISTRY OF LINE & PHEONIX ISLAND DEVELOPMENT
CIVIL ENGINEERING & TECHNICAL DIVISION (CETD)
Ronton, Kiritimati Is
Phone: 686 81214 ext 219
Website: www.mlpid.gov.ki

PROJECT TITLE:
PROPOSED KPA NEW OFFICE AT TABAKEA

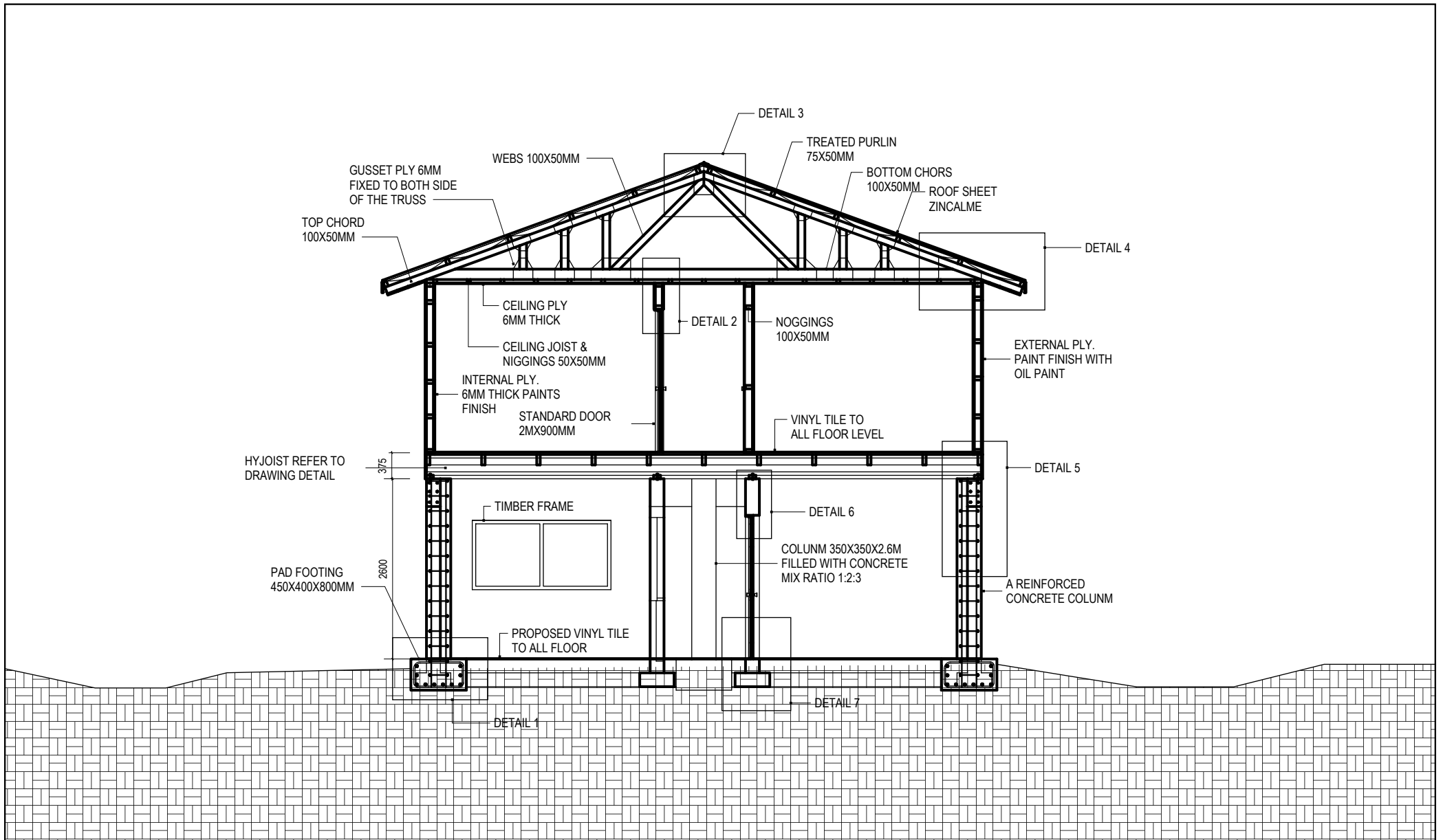
ELEVATION, A,B,C,D

Drawn by: Teiwaki Ruata (TR)
Checked by: John Kaaben (JK)

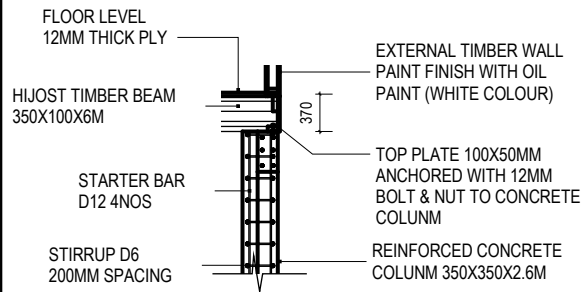
May 22, 2018

A

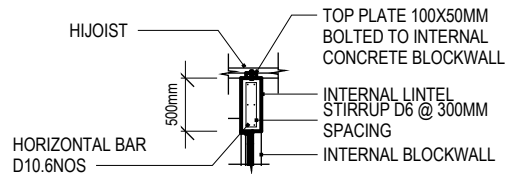
05



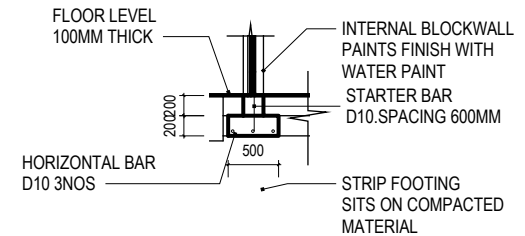
MINISTRY OF LINE & PHEONIX ISLAND DEVELOPMENT CIVIL ENGINEERING & TECHNICAL DIVISION (CETD) Ronton, Kiritimati Is Phone: 686 81214 ext 219 Website: www.mlpid.gov.ki	PROJECT TITLE: PROPOSED KPA NEW OFFICE AT TABAKEA	Drawn by: Teiwaki Ruata (TR) Checked by: John Kaaben (JK)	A
	CROSS SECTION	May 22, 2018	o6



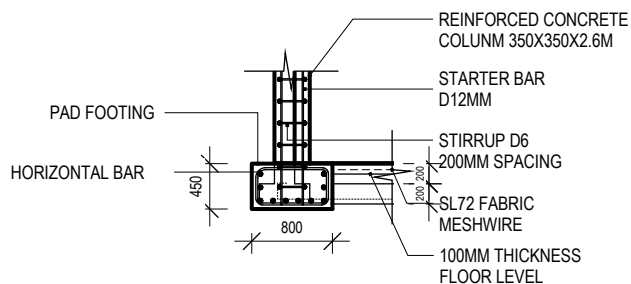
D COLUMN TO HYJOIST DETAIL
Scale: 1:75



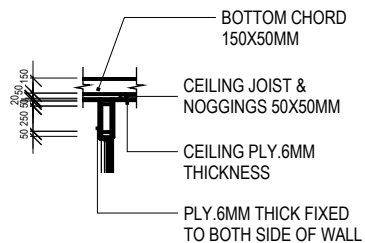
E INTERNAL WALL LINTEL
Scale: 1:75



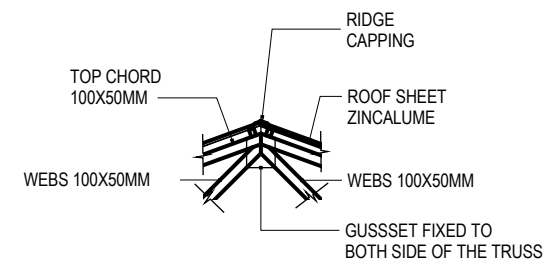
F INTERNAL BEAM STRIP FOOTING
Scale: 1:75



A PAD FOOTING TO COLUMN DETAIL
Scale: 1:75



B DOOR HEAD TO CEILING DETAIL
Scale: 1:75



C RIDGE DETAIL
Scale: 1:75

**MINISTRY OF LINE & PHEONIX ISLAND DEVELOPMENT
CIVIL ENGINEERING & TECHNICAL DIVISION (CETD)
Ronton, Kiritimati Is
Phone: 686 81214 ext 219
Website: www.mlpid.gov.ki**

PROJECT TITLE:
PROPOSED KPA NEW OFFICE AT TABAKEA

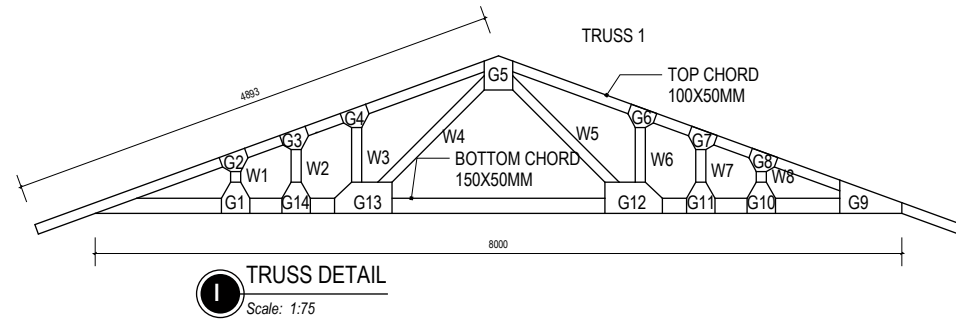
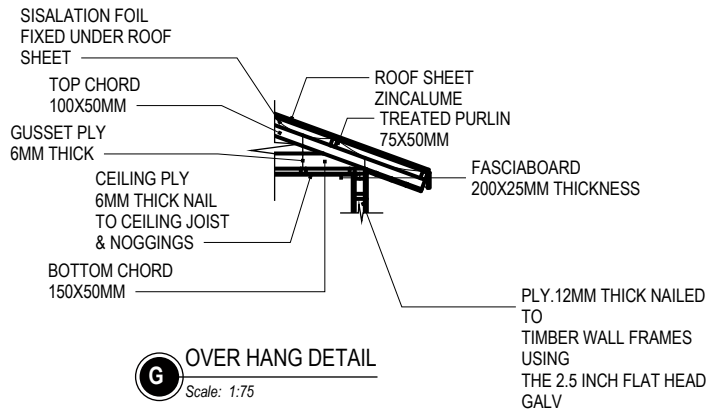
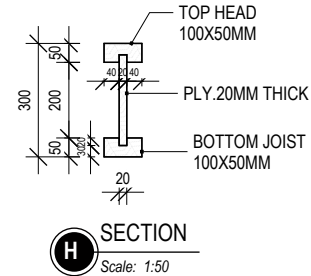
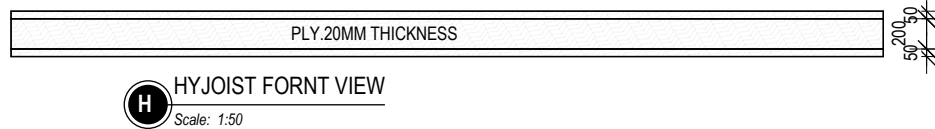
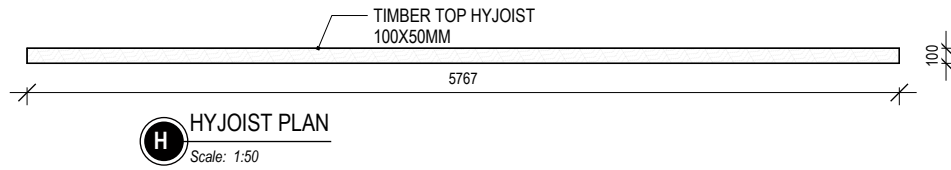
DETAIL DRAWING

Drawn by: Teiwaki Ruata (TR)
Checked by: John Kaaben (JK)

May 22, 2018

A

07



**MINISTRY OF LINE & PHEONIX ISLAND DEVELOPMENT
CIVIL ENGINEERING & TECHNICAL DIVISION (CETD)**
Ronton, Kiriritimati Is
Phone: 686 81214 ext 219
Website: www.mlpid.gov.ki

PROJECT TITLE:
PROPOSED KPA NEW OFFICE AT TABAKEA

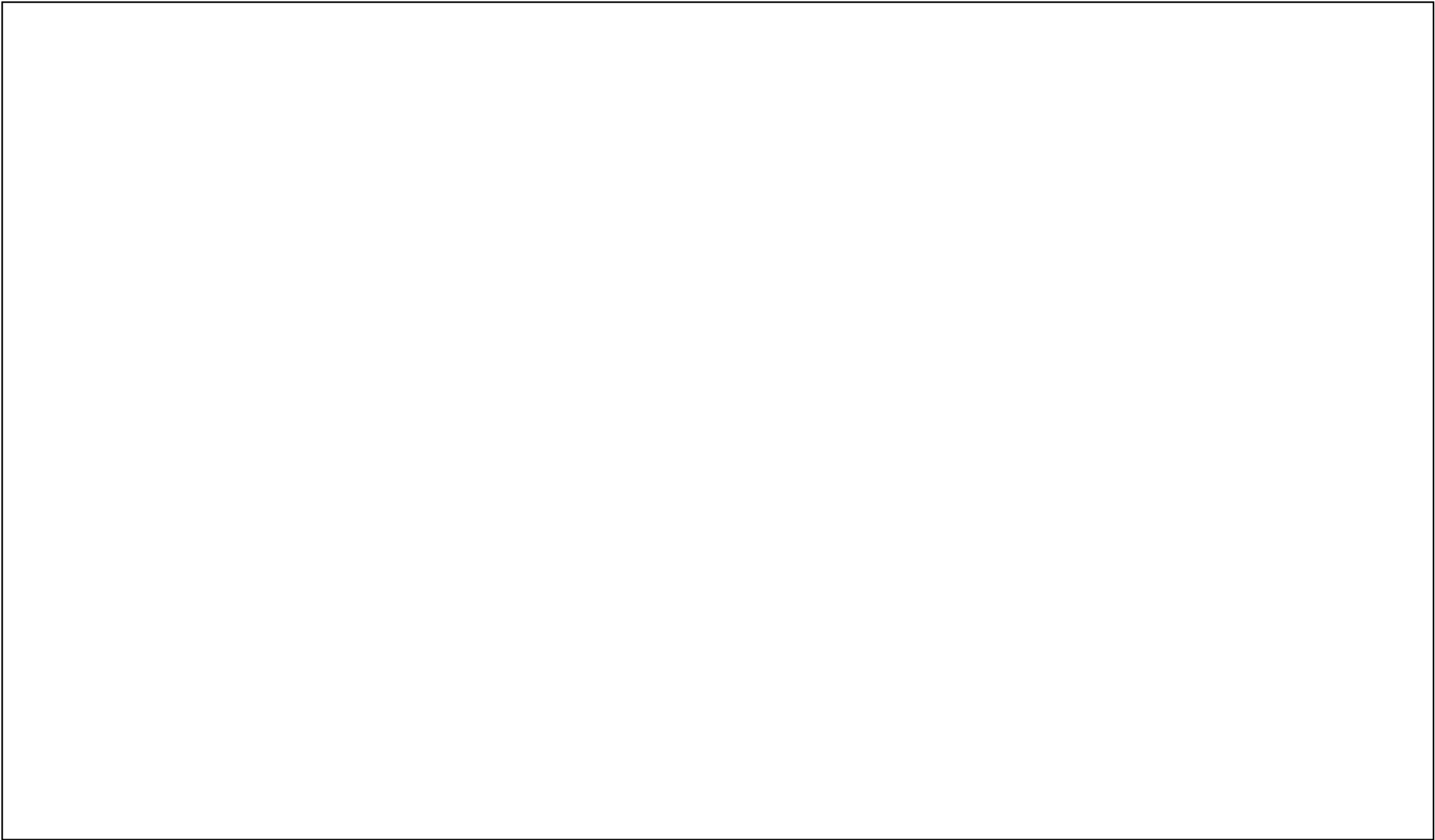
Drawn by: Teiwaki Ruata (TR)
Checked by: John Kaaben (JK)

DETAIL DRAWING

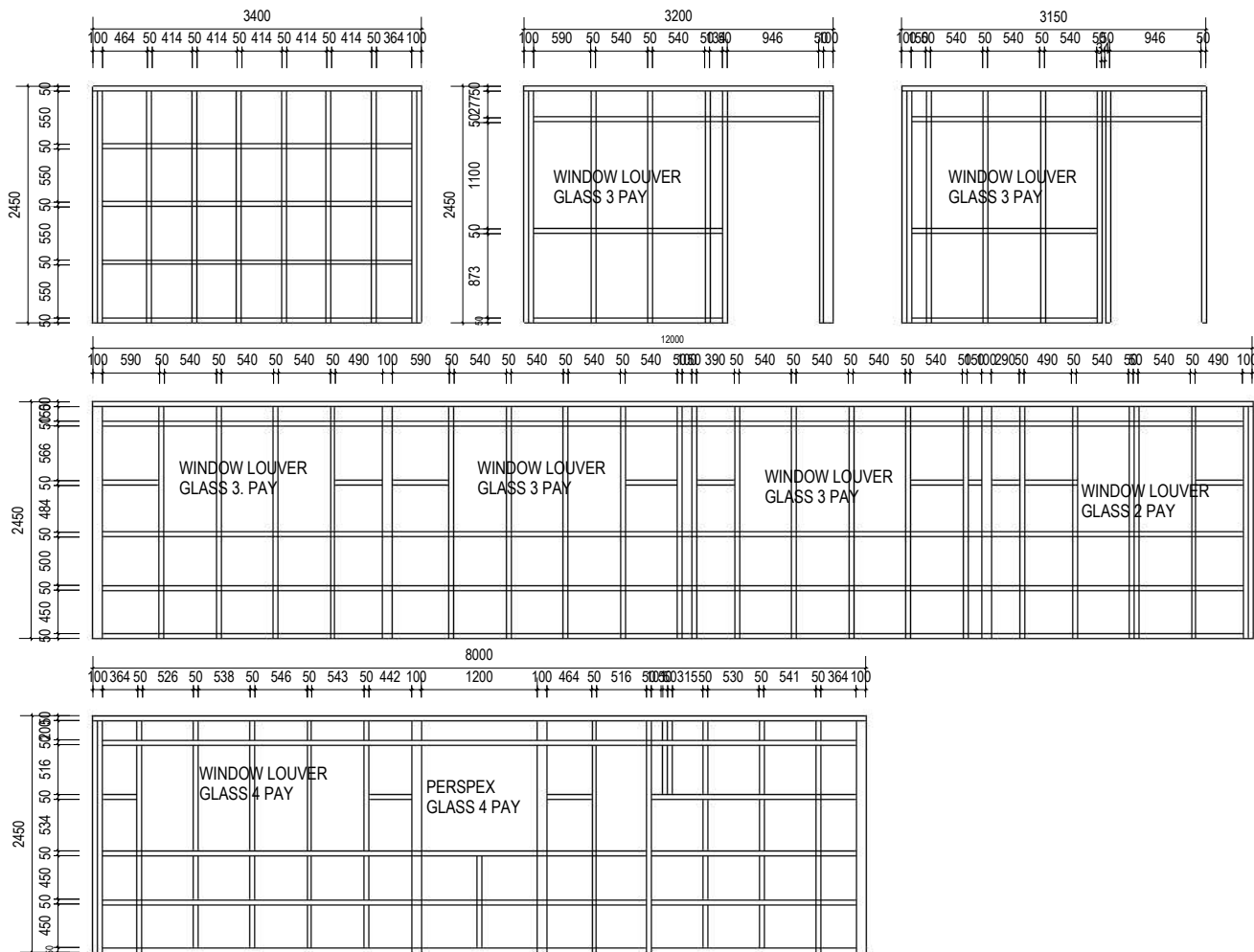
May 22, 2018

A

o8



MINISTRY OF LINE & PHEONIX ISLAND DEVELOPMENT CIVIL ENGINEERING & TECHNICAL DIVISION (CETD) Ronton, Kiritimati Is Phone: 686 81214 ext 219 Website: www.mlpid.gov.ki	PROJECT TITLE: PROPOSED KPA NEW OFFICE AT TABAKEA	Drawn by: Teiwaki Ruata (TR) Checked by: John Kaaben (JK)	A
		May 22, 2018	



A1 TIMBER WALL FRAMES DETAIL
Scale: 1:75

MINISTRY OF LINE & PHEONIX ISLAND DEVELOPMENT
CIVIL ENGINEERING & TECHNICAL DIVISION (CETD)
 Ronton, Kiritimati Is
 Phone: 686 81214 ext 219
 Website: www.mlpid.gov.ki

PROJECT TITLE:
PROPOSED KPA NEW OFFICE AT TABAKEA

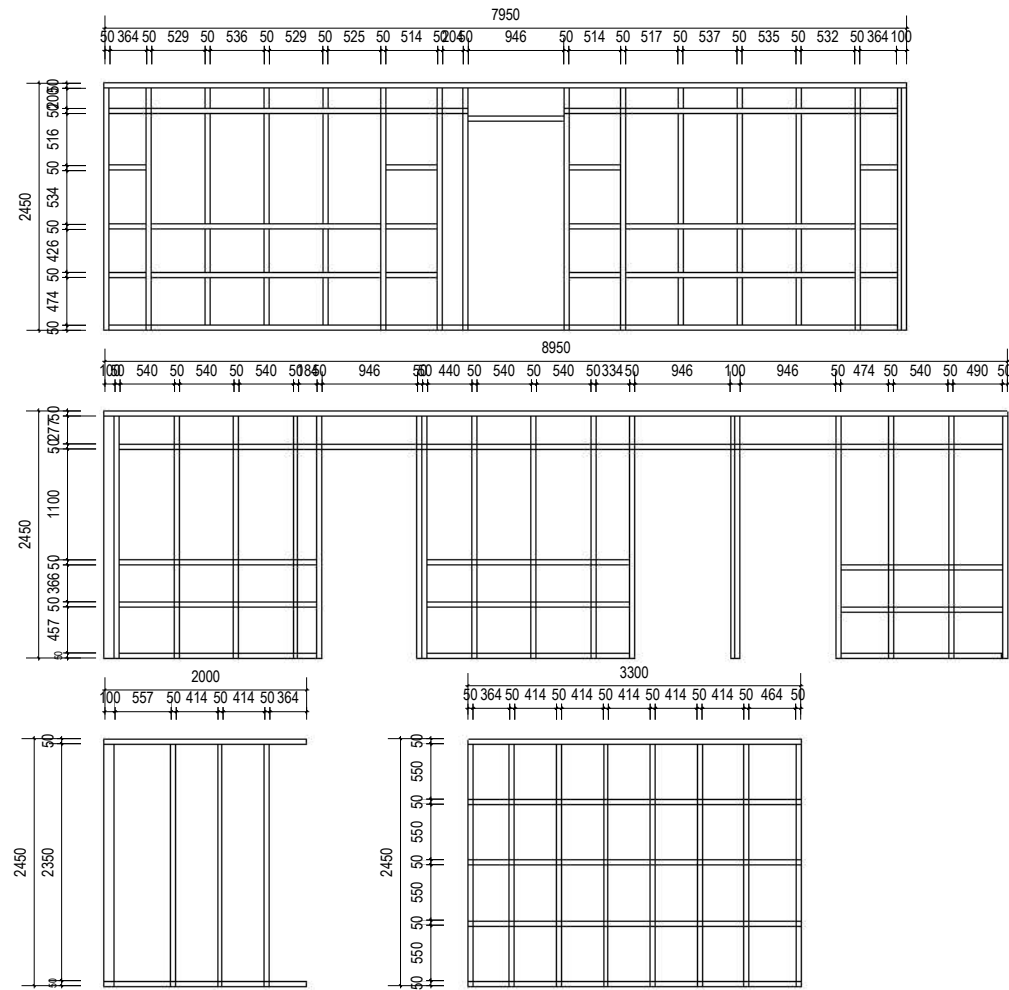
WALL TIMBER FRMES

Drawn by: Teiwaki Ruata (TR)
 Checked by: John Kaaben (JK)

May 22, 2018

A

010



A1 TIMBER WALL FRAMES DETAIL
Scale: 1:75

MINISTRY OF LINE & PHEONIX ISLAND DEVELOPMENT
CIVIL ENGINEERING & TECHNICAL DIVISION (CETD)
 Ronton, Kiritimati Is
 Phone: 686 81214 ext 219
 Website: www.mlpid.gov.ki

PROJECT TITLE:
PROPOSED KPA NEW OFFICE AT TABAKEA

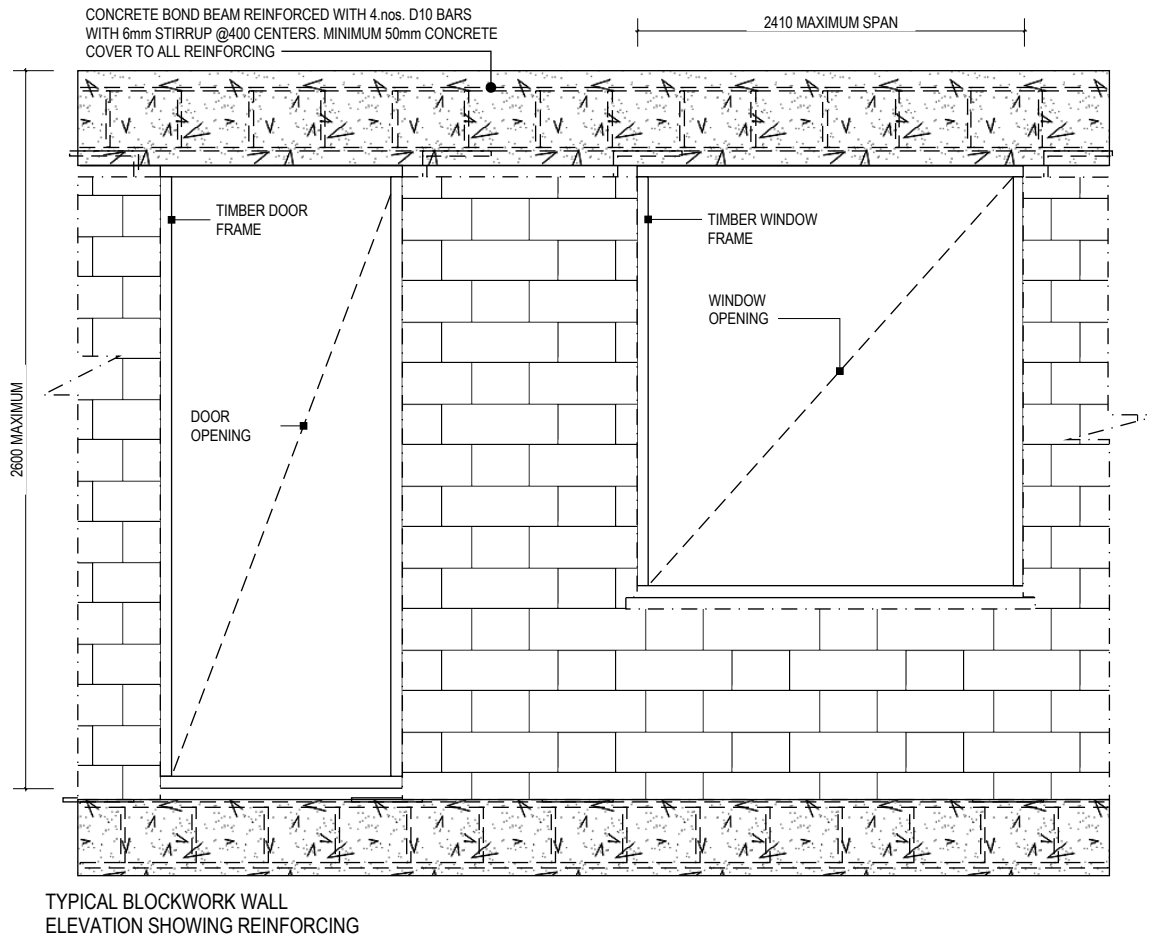
WALL TIMBER FRAMES

Drawn by: Teiwaki Ruata (TR)
 Checked by: John Kaaben (JK)

May 22, 2018

A

O11



SCALE: 1:20

MINISTRY OF LINE & PHEONIX ISLAND DEVELOPMENT
CIVIL ENGINEERING & TECHNICAL DIVISION (CETD)
 Ronton, Kiritimati Is
 Phone: 686 81214 ext 219
 Website: www.mlpid.gov.ki

PROJECT TITLE:
 PROPOSED KPA NEW OFFICE AT TABAKEA

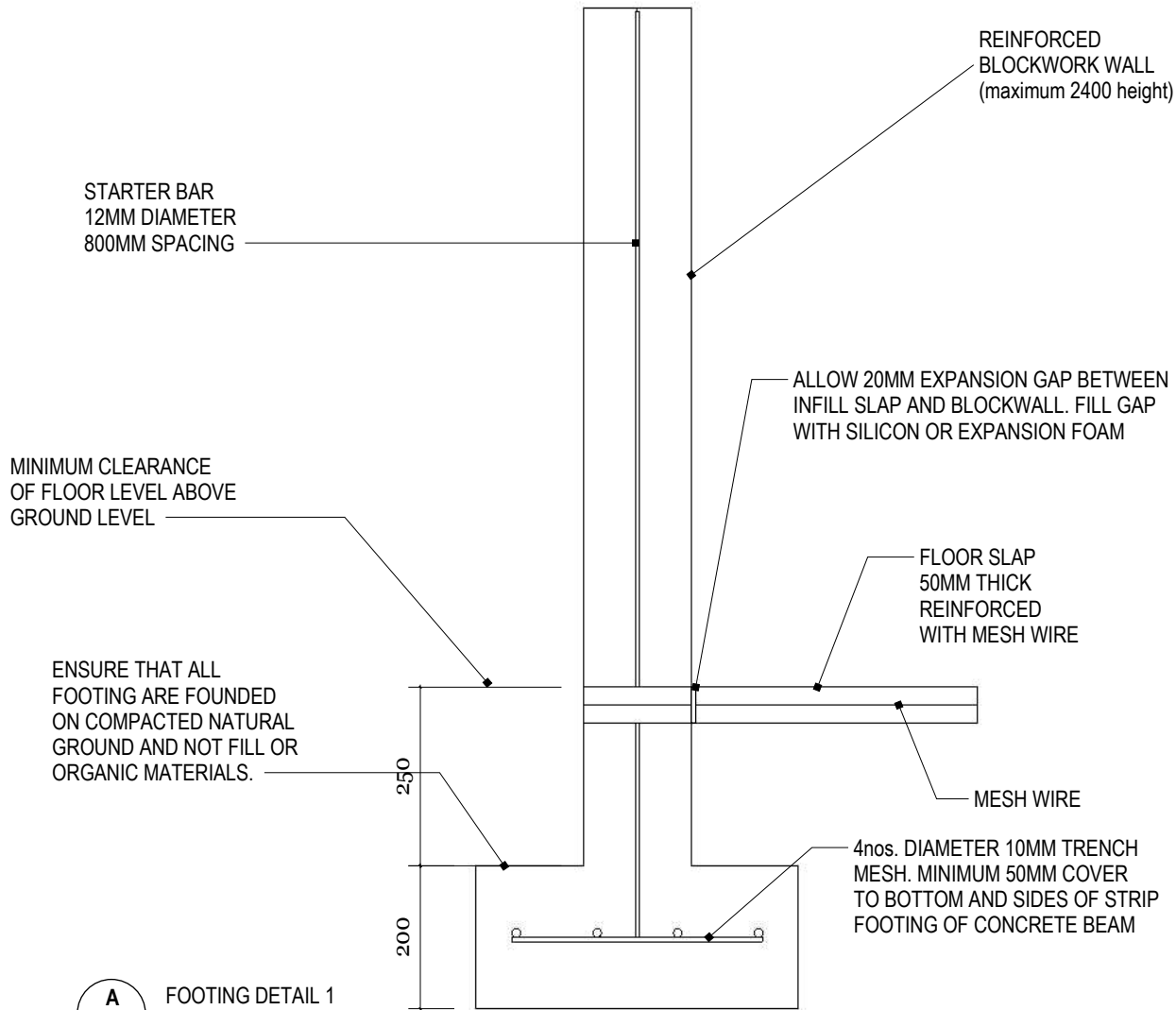
Drawn by: Teiwaki Ruata (TR)
 Checked by: John Kaaben (JK)

A

LINTEL DETAIL

May 22, 2018

O12



CONCRETE STRIP FOOTING NOTES

1. THESE DETAILS SHALL ONLY BE USED FOR SINGLE STOREY BUILDINGS
2. ALL REINFORCING SHALL HAVE 50MM CONCRETE COVER
3. STRIP FOOTING MUST SIT ON NATURAL GROUND (SAND & CORAL). WHERE FILL OR ORGANIC MATERIALS IS FOUND. THIS MUST BE REMOVED TO THE LEVEL OF THE NATURAL GROUND.
4. ALL STEEL REINFORCING TO BE MINIMUM GRADE 300MPa

CONCRETE MIX 0.75 : 2 : 3
WATER CEMENT AGGREGATE

A
A01 FOOTING DETAIL 1
Scale: 1:10

**MINISTRY OF LINE & PHEONIX ISLAND DEVELOPMENT
CIVIL ENGINEERING & TECHNICAL DIVISION (CETD)
Ronton, Kiritimati Is
Phone: 686 81214 ext 219
Website: www.mlpid.gov.ki**

PROJECT TITLE:
PROPOSED KPA NEW OFFICE AT TABAKEA

Drawn by: Teiwaki Ruata (TR)
Checked by: John Kaaben (JK)

STRIP FOOTING DETAIL

May 22, 2018

A

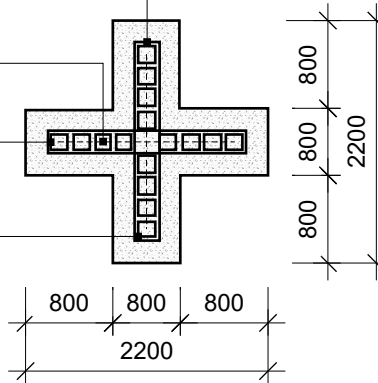
013

200 SERIES BLOCKWORK
CELLS FILLED WITH GROUT

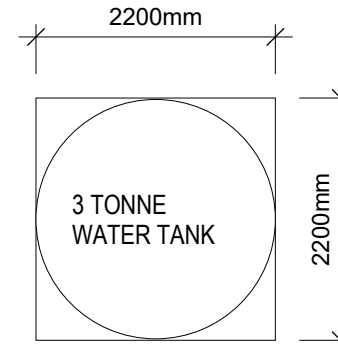
R6 HORIZONTAL BARS IN
MORTAR AT 400MM C-c

U SHAPE LADDER R12MM
BARS IN CONCRETE BLOCK
AT 400 C-c

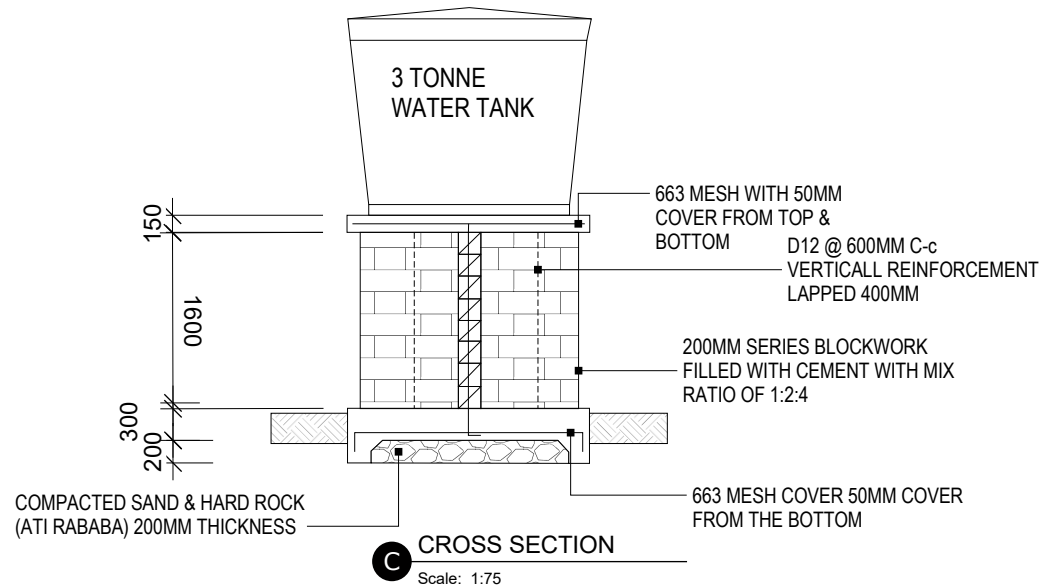
D12 BARS @ 600C-c
VERTICAL BARS



A BLOCKWORK & REINFORCED BAR
Scale: 1:75



B LAYOUT PLAN
Scale: 1:75



C CROSS SECTION
Scale: 1:75

MINISTRY OF LINE & PHEONIX ISLAND DEVELOPMENT
CIVIL ENGINEERING & TECHNICAL DIVISION (CETD)
Ronton, Kiritimati Is
Phone: 686 81214 ext 219
Website: www.mlpid.gov.ki

PROJECT TITLE:
PROPOSED KPA NEW OFFICE AT TABAKEA

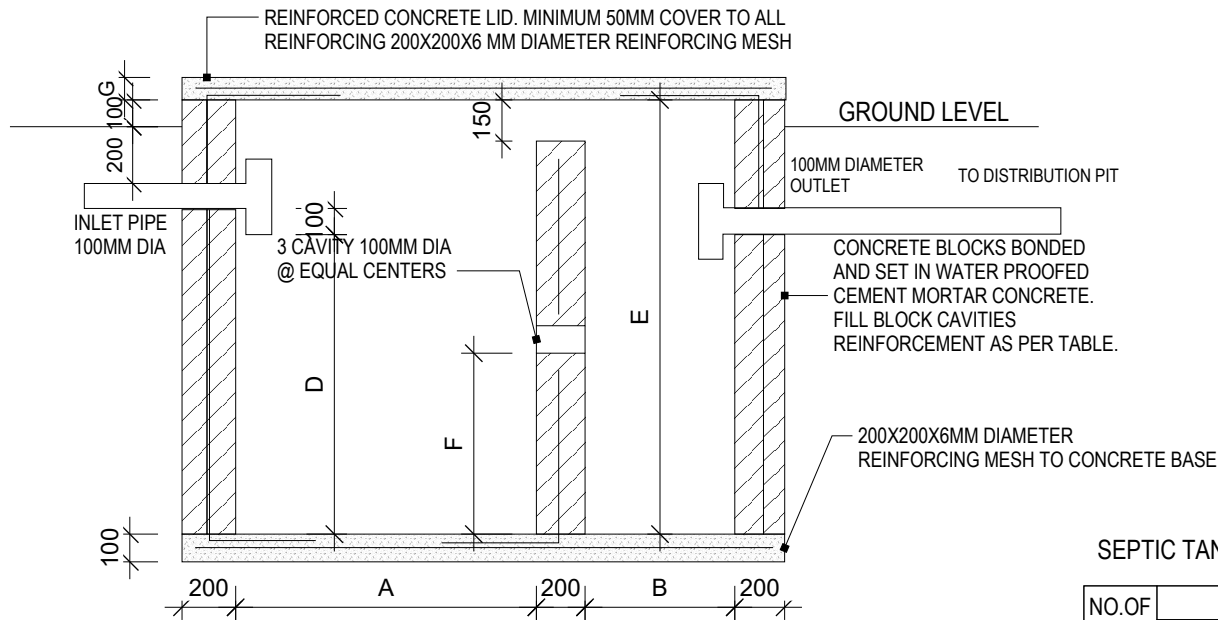
OVER HEAD TANK STAND

Drawn by: Teiwaki Ruata (TR)
Checked by: John Kaaben (JK)

May 22, 2018

A

014



NOTE:

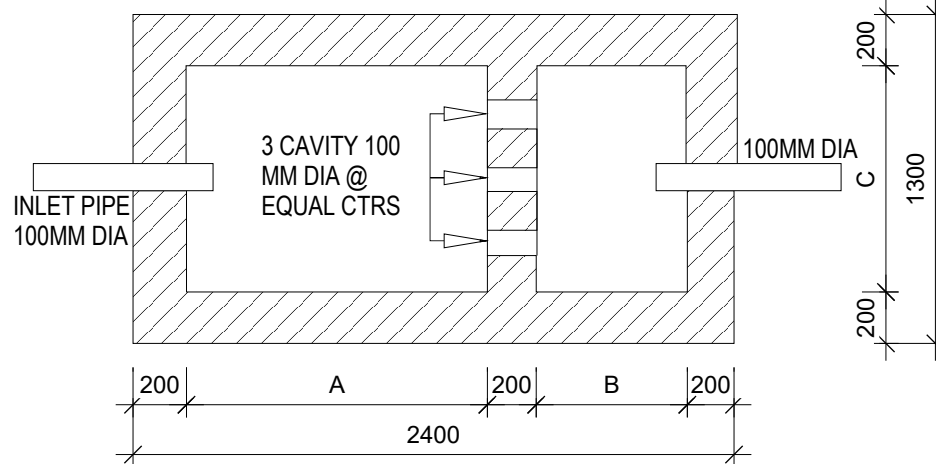
THE INTERNAL SURFACE OF THE SEPTIC TANK SHALL BE COATED WITH A WATERPROOF MEMBRANE COMPLYING WITH AS 3740. THIS MUST BE INSTALLED IN ACCORDANCE WITH THE MANUFACTURERS SPAIFICATION

SEPTIC TANK SIZING TABLE

NO.OF USER	DIMENSION IN MM							VOLUME kL (m3)	REINFORCEMENT	
	A	B	C	D	E	F	G		Vertical Bars	Horiz Bars
10	1200	0800	1900	1200	1675	740	100	2.04	D.12 @ 400	D.12 @ 600
15	1370	0760	0900	1200	1675	740	100	2.38	D.12 @ 400	D.12 @ 600
25	1675	0900	1065	1370	1830	835	100	3.74	D.16 @ 600	D.12 @ 600
40	2130	1065	1200	1370	1830	825	100	5.35	D.16 @ 600	D.12 @ 600
60	2430	1200	1370	1370	1830	825	150	6.94	D.16 @ 600	D.12 @ 600
75	2500	1370	1525	1525	1830	900	150	9.21	D.16 @ 400	D.12 @ 600
100	3150	1525	1830	1525	1980	900	150	13.59	D.16 @ 400	D.12 @ 600
150	3660	1830	2730	1525	1980	900	150	17.84	D.16 @ 400	D.12 @ 600
250	3810	2730	2430	1525	1980	900	150	21.52	D.16 @ 400	D.12 @ 600

SIZES ARE BASED ON SEPTIC TANK BEING ONLY CONNECTED TO THE TOILET

SIZES AND REINFORCING CAN BE USED FOR EITHER REINFORSCED CONCRETE OR REINFORCED CONCRETE BLOCKWORK



MINISTRY OF LINE & PHEONIX ISLAND DEVELOPMENT
 CIVIL ENGINEERING & TECHNICAL DIVISION (CETD)
 Ronton, Kiritimati Is
 Phone: 686 81214 ext 219
 Website: www.mlpid.gov.ki

PROJECT TITLE:
 PROPOSED KPA NEW OFFICE AT TABAKEA

SEPTIC TANK DETAIL

Drawn by: Teiwaki Ruata (TR)
 Checked by: John Kaaben (JK)

May 22, 2018

A

015

CONSTRUCTION SPECIFICATION

ALL SETOUT AND CONSTRUCTION DIMENSIONS ARE TO BE CHECKED ON SITE PRIOR TO STARTING ANY WORKS BY THE CONTRACTOR OR SUB-CONTRACTORS.

REFER ANY DISCREPENCIES TO ARCHITECT FOR RESOLUTION.

ROOF PLUMBING**GUTTERS**

ZINCALUME FINISH STEEL EAVES GUTTERING, LYSAGHT 125 QUAD OR APPROVED EQUIVALENT. FIX GUTTER TO TIMBER FASCIA WITH MATCHING GUTTER BRACKETS.

FALL GUTTER TO DOWNPIPES AT A MINIMUM GRADIENT OF 1 IN 400. TEST FALL OF GUTTER BY FILLING WITH WATER AND ENSURING WATER FULLY DRAINS TO DOWNPIPES.

INSTALL GUTTERS PRIOR TO FIXING ROOF SHEETING.
DO NOT USE PVC PIPE INSTEAD OF STEEL GUTTERING.

DOWNPIPES

100 DIA UPVC – PAINT FINISH.

ROOFING

STANDARD CORRUGATED STEEL ROOFING – ZINCALUME FINISH
FIX STEEL ROOFING TO TIMBER ROOFING BATTENS WITH GALVANISED ROOFING SCREWS.

RIDGE AND BARGE CAPPINGS

FOLDED STEEL SHEET – ZINCALUME FINISH
FIX CAPPINGS THROUGH STEEL ROOFING TO TIMBER ROOFING BATTENS WITH GALVANISED ROOFING SCREWS.

RAINWATER TANKS

5 TONS LITRE POLYETHYLENE RAINWATER TANK ON BLOCKWORK PLATFORM.

PROVIDE ALUMINIUM MESH INSECT SCREEN AT INLET IN TOP OF TANK.

ROOF FRAMING

ALL TIMBER FRAMING SHOULD BE TERMITE TREATED AND COMPLY WITH AS 1684.

TIMBER TRUSSES AND RAFTERS

REFER TO SECTIONS AND DETAILS FOR TRUSSES/RAFTER DESIGN.
BE SURE TO INSTALL ALL BOTTOM CHORD TIES, ROOF BRACING AND TIES TO TOP PLATES.

CEILING BATTENS/NOGGINGS

NAIL FIX 50X50 CEILING BATTENS/NOGGINGS TO UNDERSIDE OF TRUSSES AT 600 CENTRES MAX IN BOTH DIRECTIONS.

BLOCKWORK & CONCRETING**CONCRETE BLOCKS**

390x190x190 CONCRETE BLOCKS LAID IN STRETCHER BOND. 10mm FLUSH JOINTED MORTAR TO SPECIFICATION. RUN STRING LINE FOR ALL BLOCKWORK COURSES. DO NOT TOOL JOINTS.

CHECK DETAILS FOR INSTALLATION OF REINFORCING.

BACKFILL HOLLOW BLOCKS WITH GROUT.

BLOCKWORK FINISH

FLUSH JOINTED MORTAR (DO NOT TOOL JOINTS)

MORTAR MIX

1:3

CEMENT: SAND RATIO

GROUT MIX

1:1:2:4

WATER: CEMENT: SAND: AGGREGATE (10mm) RATIO

USE AT LEAST 300KG OF CEMENT PER CUBIC METRE OF CONCRETE.

CONCRETE MIX

0.75:1:2:4

WATER: CEMENT: SAND: AGGREGATE (20mm) RATIO

LAY CONCRETE SLAB OVER BLACK PLASTIC SHEETING, 50mm SAND BLINDING AND 150mm COMPACTED HARDCORE

REINFORCING

ALL STEEL REINFORCING TO BE MINIMUM GRADE 300MPa

LININGS AND TRIM CEILING

1200X2400X6mm MASONITE SHEETS NAILED TO CEILING BATTENS AT 300 CENTRES IN CENTRE OF SHEET AND AT 150 CENTRES AT SHEET EDGES.

**MINISTRY OF LINE & PHEONIX ISLAND DEVELOPMENT
CIVIL ENGINEERING & TECHNICAL DIVISION (CETD)**

**Ronton, Kiritimati Is
Phone: 686 81214 ext 219
Website: www.mlpid.gov.ki**

PROJECT TITLE:
PROPOSED KPA NEW OFFICE AT TABAKEA

SPECIFICATIONS

Drawn by: Teiwaki Ruata (TR)
Checked by: John Kaaben (JK)

May 22, 2018

A

016